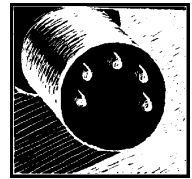




# BAND-IN-A-BOX

Presented by Dale Wolford/Dr. Hal Peterson  
San Jose High Academy MIDI Lab



April 17, 1999

## I. Introduction

A. Band-in-a-Box is an automatic accompaniment program for Windows/ & Macintosh computers. You type in the chord symbols to any song, using standard chord symbols like C, Fm7, Cm7b5 etc. choose a style and press PLAY. Band-in-a-Box then generates a pro quality 5 instrument accompaniment of bass, drums, piano, guitar and strings in over 100 styles of music.

## B. System Requirements

- 1) **Macintosh version 7.0:** MAC 68030 or PowerMac (or better), System 6.0 or higher, 8MB available Memory, 8 MB Available Hard Drive space. MIDI System or internal Mac sound system (i.e. Quicktime™ 2.5 musical instruments)
- 2) **Windows version 8.0:** Windows 3.1 or Windows 95/98/NT. 8MB RAM. 3MB available Hard Drive space. PC Soundcard or MIDI module.

## II. Basic Features

### A. Creating an accompaniment (*It Don't Mean a Thing*)

1. Select style, tempo, key, number of measures, length and times through the changes.
2. Type via the computer keyboard or play the chord changes in with a midi keyboard.
3. Putting Rests or “breaks” into a song
  - a. **All instruments rest** — Type the chord and add a period — ie. **C.**
  - b. **Shots** — Type the chord and add 2 periods — ie. **F#sus..**
  - c. **Held Chords** — add 3 periods after the chord name — ie. **Eb7...**
  - d. **Only some instruments rest** — After typing the periods, you can type the letter names of instruments that *shouldn't* rest. — ie. **Bb7..dp** This is an Bb7 shot for all instruments except the drums & piano.

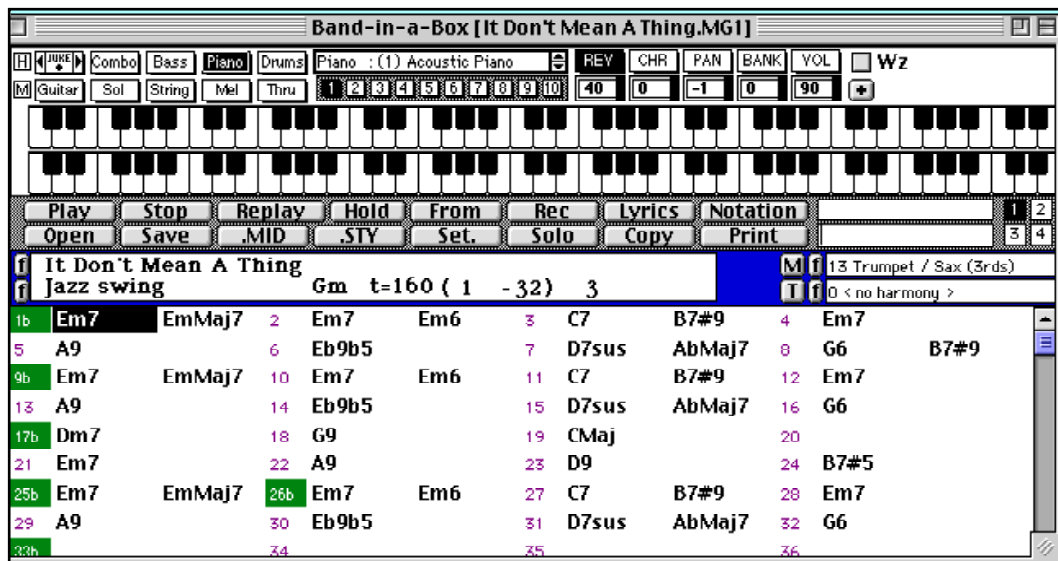


Fig. 1 - Main Screen

B. Controls (demo)



C. Instrument selection-changing sounds for each instrument



D. Mixer Controls for volume, pan, etc.



E. The “Wizard”

- use your QUERTY keyboard or midi keyboard to play “perfect” solos
  - For QUERTY improv use the following keys:
    - Row Z thru “ / ” — will play chord tones
    - Row A thru “ ; ” — will play passing tones

1) Uses

- Students can develop rhythmic improvisation without having to worry about playing the “right” notes.
- record your “creation”, simply hit the “R” key and select from the window that appears.
- add harmonies and create a new tune which you can export via SMF (Standard Midi Format) to your notation program and create a quick arrangement.

III. Notation

- Read on the screen in real time or print out the melody, piano, bass, drum, or soloist parts.

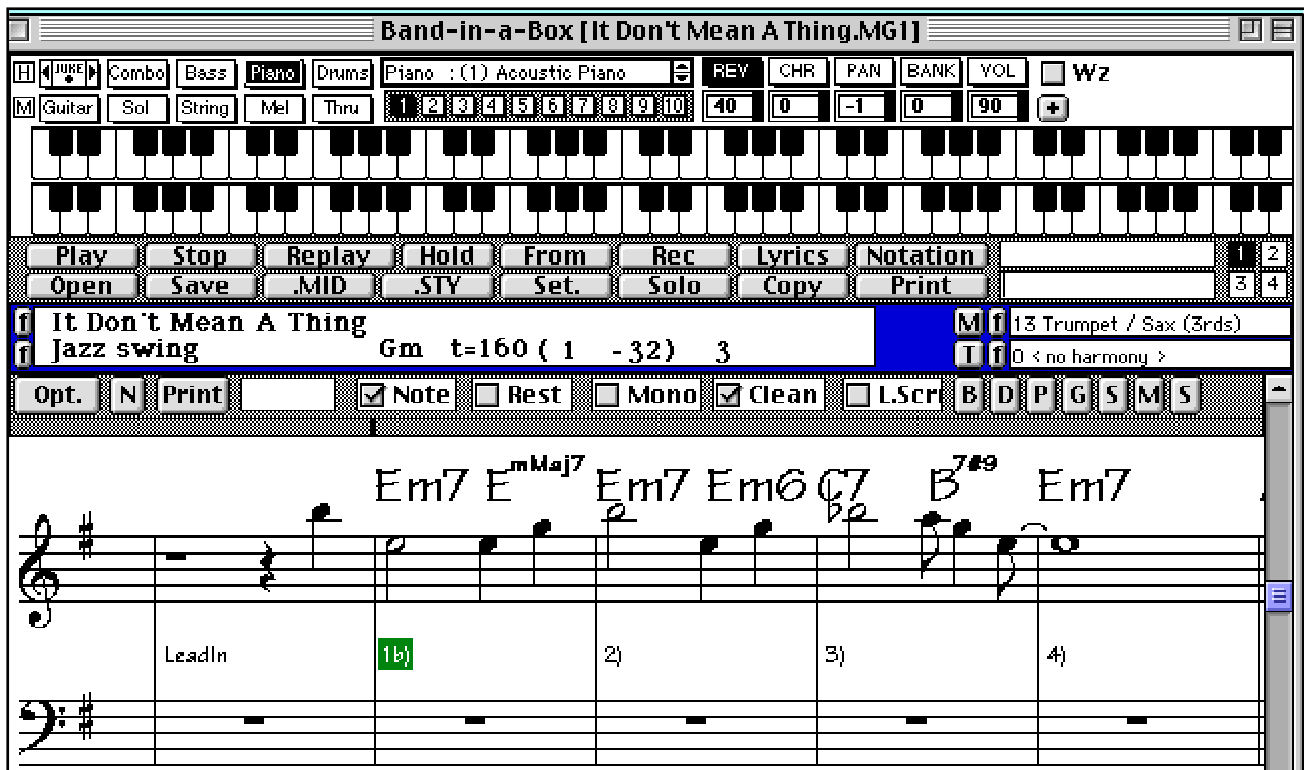


Fig. 5 — Notation View

## B. Transpose parts for Eb saxes, Bb trumpet, etc.

- 1) Hit the *opt.* key when you're in the Notation View (Fig. 4)
- 2) Input the following in the "Transpose" Box:

- Bb Trumpet/Clarinet/Tenor Sax = -2
- Eb Alto Sax/Bari Sax = +9
- Trombone = -12 (to view in bass clef)
- Concert Pitch should = 0

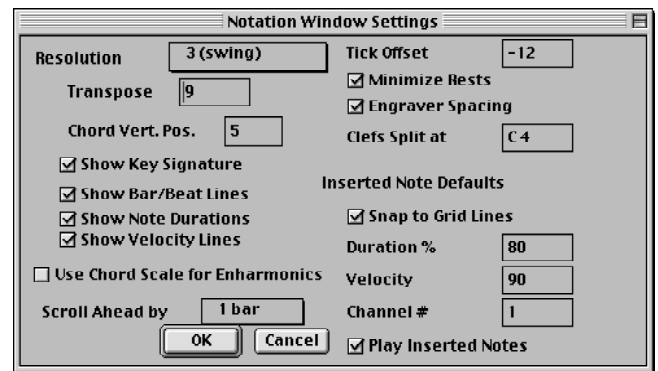


Fig. 6 - Notation Window Settings

## IV. The Soloist Function— "Way Cool!"

**Description:** This is one of the most remarkable features of versions 7 and 8 of BIAB. Pick any song or chords in any style, & choose a "soloist". Band-in-a-Box then creates & plays a professional quality solo, in the style of your choice. This allows you to select your favorite soloist (ie. Charlie Parker, Miles Davis, Benny Goodman, John Coltrane, Louis Armstrong, etc.) or create your own soloists using the Soloist Maker.

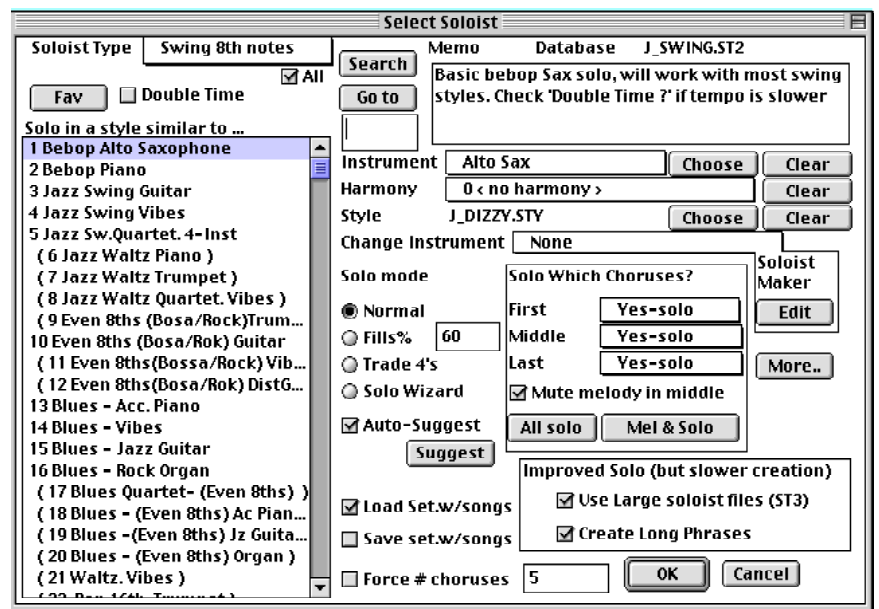


Fig. 7 Fig. 4- Soloist Selection

### A. Using the Soloist Function

1. Hit **Solo** Button on the control panel. The above (fig. 7) window appears.
2. Select a style from the left column *Solo in a style similar to...* Styles usually have an instrument associated with them (ie. #1 "Bebop Alto Saxophone") This give you the solo in the range with the sound of that instrument. You can change this by selecting a different instrument from the **Instrument** tab.
3. Harmonize the solo to create a Supersax style harmony or anything you want from the **Harmony** tab.
4. Select the accompaniment style from the "Style" section by hitting the **Choose** button.
5. **Solo Mode** -Select from:
  - **Normal** - self explanatory
  - **Fills%**
  - **Trade 4's** - Set solo for you to play 4 bars, then BIAB will do 4.
  - **Solo Wizard** — With button "on" you will enable the Soloist Wizard, which like the Wizard already discussed allows you to solo in the style of the current soloist with the "right" notes! Great for practicing phrasing and developing rhythmic idea without worrying about notes. Simply play notes on the MIDI or QWERTY keyboard.

## B. Soloist Maker.

This module allows you to define your own soloists. For example, let's say you want to create a soloist in the style of "John Coltrane" - the great jazz saxophonist. The soloist maker allows you to define the parameters essential to Coltrane's playing, such as instrument range (i.e. tenor saxophone), extra legato playing, more on top of the beat than typical jazz musicians, & playing straighter 8th notes than usual swing 8th notes. Also, you can set phrasing options such as how long the phrase should be & how much "space" to leave between phrases. You can also set how "outside" the playing should be. In the case of a John Coltrane style - you set that to the maximum! Then "turn him loose" & hear the soloist play over any song!

## V. Teaching Uses

### A. Improvisation Practice

- along with accompaniment at slower tempos
- Repeat 4 bar phrases ("Loop Screen")
- Trade 4's
- Try different styles

### B. Make accompaniments tapes for instrumental music classes.

- 1) Beginning Band / Orchestra accompaniments (demo Hegvik tape)
- 2) Elementary Recorder — Create a "cool" *Mary Had a Little Lamb!*
  - a. add harmony parts (ie. Trumpet/Sax in 3rds)
  - b. change styles in rehearsal for variety (ie. Bach, Alberti, Reggae, Rock, etc.)
- 3) Beginning Guitar Methods Classes
- 4) Anymore suggestions? You can think up your own!

### C. Create Quick & Dirty arrangements (demo with *It Don't Mean a Thing*)

- Create the file you want in BIAB with all chords, style, melody or soloists. Save it!
- From the **File** menu, select **Save Standard MIDI file**. (Fig. 8)
- Open your notation program (Overture, Encore, Finale, etc.), select **Open File**, find the BIAB -SMF and and make any adjustments that are needed. (Fig. 9)

New	⌘N
Open song...	⌘O
Open Filtered by Style...	
Open Song with Melody...	
Open Favorite Songs...	
Save	⌘S
Save song As...	
Save Standard MIDI File...	opt S
Save song with Patches...	Ctrl S
Play Song	⌘A
Replay Already Constructed Song	⌘R
Notation Window	⌘W
Page Setup...	
Print...	⌘P
Lyric Window	L
Quit	⌘Q

Fig. 8 - File Menu



Fig. 9 — Notated Score in Composer's Mosaic